



# REVISTA ARGENTINA DE MICROBIOLOGÍA

[www.elsevier.es/ram](http://www.elsevier.es/ram)



## ORIGINAL ARTICLE

# Enterotoxigenic profiles and submerged and interface biofilms in *Bacillus cereus* group isolates from foods

Itzel-Maralhi Cruz-Facundo<sup>a</sup>, Roberto Adame-Gómez<sup>a</sup>, Natividad Castro-Alarcón<sup>b</sup>,  
Jeiry Toribio-Jiménez<sup>c</sup>, Yaneth Castro-Coronel<sup>d</sup>,  
María-Cristina Santiago-Dionisio<sup>e</sup>, Marco-Antonio Leyva-Vázquez<sup>f</sup>,  
David Tafolla-Venegas<sup>g</sup>, Arturo Ramírez-Peralta<sup>a,\*</sup>

<sup>a</sup> Universidad Autónoma de Guerrero, Laboratorio de Investigación en Patometabolismo Microbiano, Facultad de Ciencias Químico Biológicas, Chilpancingo de los Bravo, Guerrero 39070, Mexico

<sup>b</sup> Universidad Autónoma de Guerrero, Laboratorio de Investigación en Microbiología, Facultad de Ciencias Químico Biológicas, Chilpancingo de los Bravo, Guerrero CP39070, Mexico

<sup>c</sup> Universidad Autónoma de Guerrero, Laboratorio de Investigación en Microbiología Molecular y Biotecnología Ambiental, Facultad de Ciencias Químico Biológicas, Chilpancingo de los Bravo, Guerrero CP39070, Mexico

<sup>d</sup> Universidad Autónoma de Guerrero, Laboratorio de Investigación en Citopatología e Histoquímica, Facultad de Ciencias Químico Biológicas, Chilpancingo de los Bravo, Guerrero CP39070, Mexico

<sup>e</sup> Universidad Autónoma de Guerrero, Laboratorio de Investigación en Análisis Microbiológicos, Facultad de Ciencias Químico Biológicas, Chilpancingo de los Bravo, Guerrero CP39070, Mexico

<sup>f</sup> Universidad Autónoma de Guerrero, Laboratorio de Investigación en Biomedicina Molecular, Facultad de Ciencias Químico Biológicas, Chilpancingo de los Bravo, Guerrero CP39070, Mexico

<sup>g</sup> Universidad Michoacana de San Nicolás de Hidalgo, Facultad de Biología, Laboratorio de Parasitología, Morelia, Michoacan 58004, Mexico

Received 15 February 2022; accepted 26 January 2023

## KEYWORDS

*Bacillus cereus*;  
Enterotoxins;  
Biofilm;  
Food

**Abstract** Biofilm formation by *Bacillus cereus* strains is now recognized as a systematic contamination mechanism in foods; the aim of this study was to evaluate the production of submerged and interface biofilms in strains of *B. cereus* group in different materials, the effect of dextrose, motility, the presence of genes related to biofilms and the enterotoxigenic profile of the strains. We determine biofilm production by safranin assay, motility on semi-solid medium, toxin gene profiling and genes related to biofilm production by PCR in *B. cereus* group isolated from food. In this study, we observe strains used a higher production of biofilms in PVC; in the BHI broth, no submerged biofilms were found compared to phenol red broth and phenol red broth supplemented with dextrose; no strains with the *ces* gene were found, the enterotoxin profile was the most common the profile that includes genes for the three

\* Corresponding author.

E-mail address: [ramirezperaltauagro@gmail.com](mailto:ramirezperaltauagro@gmail.com) (A. Ramírez-Peralta).

<https://doi.org/10.1016/j.ram.2023.01.007>

0325-7541/© 2023 Asociación Argentina de Microbiología. Published by Elsevier España, S.L.U. This is an open access article under the CC BY-NC-ND license (<http://creativecommons.org/licenses/by-nc-nd/4.0/>).

Please cite this article as: I.-M. Cruz-Facundo, R. Adame-Gómez, N. Castro-Alarcón et al., Enterotoxigenic profiles and submerged and interface biofilms in *Bacillus cereus* group isolates from foods, Revista Argentina de Microbiología, <https://doi.org/10.1016/j.ram.2023.01.007>

enterotoxins. We observed a different distribution of *tasA* and *sipW* with the origin of isolation of the strain, being more frequent in the strains isolated from eggshell. The production and type of biofilms are differential according to the type of material and culture medium used.

© 2023 Asociación Argentina de Microbiología. Published by Elsevier España, S.L.U. This is an open access article under the CC BY-NC-ND license (<http://creativecommons.org/licenses/by-nc-nd/4.0/>).

## PALABRAS CLAVE

*Bacillus cereus*;  
Enterotoxinas;  
Biopelículas;  
Alimentos

## Perfiles enterotoxigénicos y biopelículas de superficie y sumergidas en aislados del grupo *Bacillus cereus* de alimentos

**Resumen** La formación de biopelículas por cepas de *Bacillus cereus* es reconocida como un mecanismo de contaminación sistemática en alimentos; el objetivo del estudio fue evaluar la producción de biopelículas sumergidas y de superficie en cepas del grupo de *Bacillus cereus* en diferentes materiales, el efecto de la dextrosa, la motilidad, la presencia de genes relacionados a biopelículas y el perfil enterotoxigénico de las cepas. Determinamos la producción de biopelículas por el ensayo de safranina, motilidad en medio sólido, perfil enterotoxigénico y genes relacionados a producción de biopelículas por PCR en aislados del grupo de *Bacillus cereus* de alimentos. En este estudio, observamos en las cepas utilizadas una alta producción de biopelículas en PVC; en caldo BHI, no se encontraron biopelículas sumergidas en comparación con el caldo rojo de fenol y caldo rojo de fenol suplementando con dextrosa; no se encontraron cepas con el gen *ces*, el perfil de enterotoxinas más común fue el perfil que incluía los genes de las tres enterotoxinas, también observamos una distribución diferente de *tasA* y *sipW* con relación al origen de la cepa, siendo más frecuente estos genes en las cepas aisladas de huevos. La producción y el tipo de biopelículas es diferente de acuerdo con el tipo de material y el medio de cultivo utilizado.

© 2023 Asociación Argentina de Microbiología. Publicado por Elsevier España, S.L.U. Este es un artículo Open Access bajo la licencia CC BY-NC-ND (<http://creativecommons.org/licenses/by-nc-nd/4.0/>).

## Introduction

*Bacillus cereus* is a Gram positive microorganism, widely distributed in the environment, capable of causing food poisoning due to the consumption of contaminated food, which is caused by the production of emetic toxin (encoded by the *ces* operon) in food<sup>16</sup> or from diarrheagenic toxins (HBL, NHE, and CYTK) in the small intestine when spores are germinated by the pH of the intestinal lumen<sup>7,22,34,35</sup>.

The formation of endospores has been described as one of the main mechanisms associated with the ubiquity of the *B. cereus*, and its presence throughout the food production chain. These endospores are resistant to various physical and chemical agents<sup>14</sup>, as well as their adhesion characteristics<sup>18,19,48</sup>. However, biofilm formation by *B. cereus* strains is also now recognized as a systematic contamination mechanism<sup>50</sup> and has been described in food industries, including milk, sugary drinks, and ice cream<sup>23,37,46</sup>. This biofilm formation has been described in the case of *B. cereus* in product storage tanks or pipes<sup>36</sup>. Also, the formation of two biofilms stands out on the interface of the stored liquids (air-interface liquid) and submerged (solid-liquid interface)<sup>50</sup>. Because the food production environment has infrastructure and equipment made of different materials, the formation of biofilms of *B. cereus* has been studied in different hydrophobic or hydrophilic materials<sup>5,25,33</sup>, as well as in different culture

media<sup>1,33</sup> and the participation of different trace elements in the formation of biofilms<sup>24,29</sup>, even the relationship with the origin of isolation of the strain has been sought<sup>5,25,31</sup>. Ultimately, genes related to biofilm production have been investigated and found as homologs in *B. subtilis*<sup>9,11</sup>, a microorganism in which biofilm production has been extensively studied, in addition to the possible participation of flagellum during the process<sup>28</sup>. Therefore, the objective of this work was to evaluate the production of submerged and interface biofilms, the effect of dextrose on motility and biofilm production, the presence of genes related to biofilms, and the enterotoxigenic profile of strains of *B. cereus* group from different foods in different materials

## Materials and methods

### Study group

The study included 43 strains biochemically identified as *Bacillus cereus* group according to ISO 7932:2004. The strains belonged to the biobank of the Laboratorio de Patometabolismo Microbiano of Universidad Autonoma de Guerrero and were isolated from previous studies. All the strains were isolated in southern Mexico, on metallic surfaces and food distributed throughout the country (powered infant formula, infant food, and eggshell). The *B. cereus* ATCC 14579 strain was used as a positive control strain for

**Table 1** Primers sequences and cycling conditions used for molecular identification and toxin gene detection.

Gene	Primer sequences	PCR cycling conditions	Reference
<i>gyrB</i>	F – GCC CTG GTA TGT ATA TTG GAT CTA C R – GGT CAT AAT AAC TTC TAC AGC AGG A	Initial denaturation of 2 min at 94 °C, followed by 30 cycles at 94 °C for 30 s, at 52 °C for 1 min and 72 °C for 30 s, and final elongation at 72 °C for 10 min	49
<i>nheABC</i>	F – AAG CIG CTC TTC GIA TTC R – ITI GTT GAA ATA AGC TGT GG	Initial denaturation of 5 min at 94 °C, followed by 30 cycles at 94 °C for 30 s, 49 °C for 1 min and at 72 °C for 1 min, and final elongation at 72 °C for 5 min	15
<i>hblABD</i>	F – GTA AAT TAI GAT GAI CAA TTT C R – AGA ATA GGC ATT CAT AGA TT		
<i>ces</i>	F – TTG TTG GAA TTG TCG CAG AG R – GTA AGC GGA CCT GTC TGT AAC AAC	Initial denaturation of 2 min at 94 °C, followed by 30 cycles at 94 °C for 30 s, at 52 °C for 1 min and 72 °C for 30 s and a final elongation at 72 °C for 10 min	
<i>cytK-plcR</i>	P1 – CAA AAC TCT ATG CAA TTA TGC AT P3 – ACC AGT TGT ATT AAT AAC GGC AAT C	Initial denaturation of 2 min at 94 °C, followed by 30 cycles at 94 °C for 30 s, at 52 °C for 1 min and 72 °C for 30 s, and final elongation at 72 °C for 10 min	40
<i>tasA</i>	F – AGC AGC TTT AGT TGG TGG AG R – GTA ACT TAT CGC CTT GGA ATTG	Initial denaturation of 5 min at 94 C, followed by 40 cycles at 94 °C for 30 s, 59 °C for 45 s and 72 °C for 45 s, and final elongation at 72 °C for 5 min	11
<i>sipW</i>	F – AGA TAA TTA GCA ACG CGA TCTC R – AGA AAT AGC GGA ATA ACC AAGC	Initial denaturation of 5 min at 94 °C, followed by 40 cycles at 94 °C for 30 s, 54 °C for 45 s, and 72 °C for 45 s, and a final elongation at 72 °C for 5 min	

molecular identification of *B. cereus*, toxin gene profiling (*hbl+*), motility, and genes related to biofilm production. To control of amplification of *nhe* and *cytK* genes, a strain of *B. cereus* BC372 previously characterized in the laboratory was used. *B. cereus* BC372 was originally isolated from adobero cheese<sup>2</sup>.

### Molecular identification and toxin gene profiling of *B. cereus* isolates

The chromosomal DNA was obtained by thermal shock from bacterial cultures. Briefly, cells from one colony were suspended in sterile water, heated at 95 °C for 3 min, and then placed on ice. After centrifugation, the supernatants were used as a template for the molecular identification of the *Bacillus cereus* group, enterotoxin profile, and genes that possibly participate in biofilm production.

The differentiation of *B. cereus* group was carried out by the amplification by polymerase chain reaction (PCR) to the *gyrB* gene and the toxin gene profiles from *nheABC*, *hblABD*, *ces*, and *cytK* gene. The final mix for each PCR reaction contained 0.2 mM of each dNTP, 3 mM MgCl<sub>2</sub>, 0.2 μM of the primers, 1 U of Taq DNA polymerase (Ampliqon, Odense, Denmark), 5 μl of 10× buffer and 1 μl of DNA as a template. The PCR cycling conditions and primers are shown in Table 1. We used a thermocycler for endpoint PCR (Applied Biosystem). A *B. subtilis* strain was used as a negative control, this strain was previously characterized in the laboratory. *B. subtilis* was originally isolated from vegetables<sup>1</sup>. The complete characterization of positive and negative strains is included in this manuscript (Fig. S1).

Electrophoresis was performed on 2% agarose gels at 80V for 120 min. The gels were stained with Midori Green

(Nippon Genetics, Düren, Germany) and visualized with UV light. A 100bp molecular weight marker was used in all electrophoresis (CSL-MDNA-100BP, Cleaver Scientific Ltd., Warwickshire, England, UK).

### Biofilm production

Before the determination of static biofilms on polyvinylchloride (PVC), coupons of PVC were placed inside glass tubes. The coupons were rinsed to remove dirt and other organic components and were sterilized before the use. The biofilms were generated in brain heart infusion broth (BHI). Phenol red broth with or without dextrose was used at a concentration of 1% to assess the participation of carbohydrates (dextrose). Each glass tube containing the PVC coupon was filled with 1 ml of the corresponding broth. The broths were inoculated with 1% volume of a 24-h culture (3 ml). The tubes with the PVC coupons were incubated at 30 °C for 48 h under static conditions. For the determination in glass and polyethylene, the procedure was similar, but without the PVC coupons and tubes of each respective material. In the case of polystyrene, 96 well microplates were used, which were filled with 200 μl of the respective broths and 1% of a 24-h culture. Incubation times were the same.

Next, the biofilm formation was measured by performing a safranin assay. Briefly, after incubation, the growth was read by removing 200 μl of culture and reading it at an absorbance of 600 nm. Then, in the case of PVC, the coupons were carefully washed three times by dipping them in saline phosphate buffer (PBS) (Life Technologies, Carlsbad, CA, USA) using sterile tweezers. In the case of the glass and polyethylene tubes, as well as the polystyrene plates, the medium was removed, and they were washed

three times with PBS. The adhered biofilm was stained with 0.1% safranin solution (BD Difco, Franklin Lakes, NJ, USA) for 30 min. At this point, in the case of glass, due to the volume of the medium used, it was possible to identify interface biofilms (a ring that forms in the glass tube at the limit of the culture medium) and submerged (those that form at the bottom tube). The coupons, the glass and polyethylene tubes, and the polystyrene plates were washed with PBS another three times and incubated with 70% ethanol for 30 min to release the biofilm-bound safranin. The solubilized safranin was quantified by measuring the absorbance at a wavelength of 492 nm. The safranin tests were repeated in three independent experiments. The culture medium without inoculum was used as a negative control. The formula proposed by Niu and Gilbert<sup>38</sup> was used to determine the specific biofilm formation (SBF). Strains with values above 25% SBF were considered positive for biofilm production.

### Motility determination

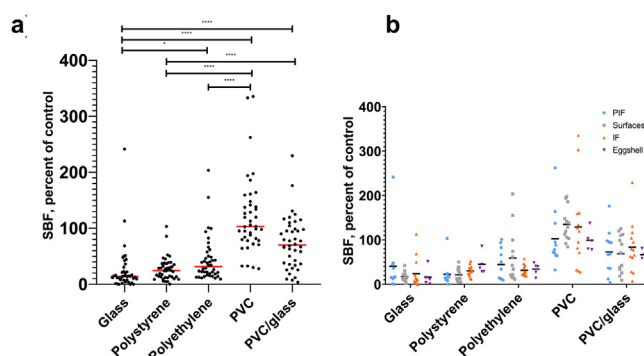
Motility was determined; for this, 3.5 g/l of bacteriological agar (0.35%) was added to the respective broths used for biofilm production in to use them as a soft medium. This medium was poured into Petri dishes and allowed to gel before being inoculated. Ten  $\mu$ l of a 24 h liquid bacterial culture was placed in the center of the plate. After the incubation times had elapsed, the size of the colony was measured with a vernier caliper. The tests were repeated in three independent experiments. A *Klebsiella pneumoniae* strain was used as a negative control.

### Determination of genes related to biofilm production in *Bacillus cereus* group isolates

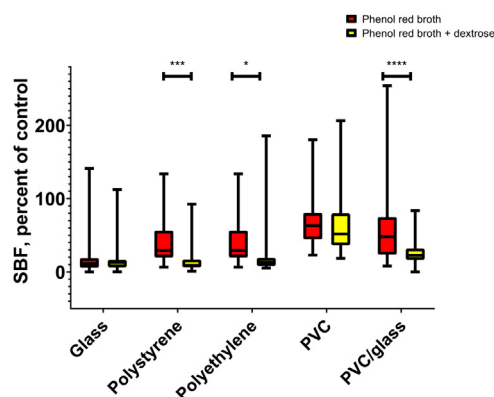
Genes related to biofilm formation were determined by PCR amplification of the regions coding for *tasA* and *sipW*. The final mix for each PCR reaction contained 0.2 mM of each dNTP, 3 mM  $MgCl_2$ , 0.2  $\mu$ M of the primers; 1 U of Taq DNA polymerase (Ampliqon, Odense, Denmark), 5  $\mu$ l of 10 $\times$  buffer and 1  $\mu$ l of DNA as a template. The PCR cycling conditions and primers are shown in Table 1. Electrophoresis was performed on 2% agarose gels at 80V for 45 min. The gels were stained with Midori Green (Nippon Genetics, Düren, Germany) and visualized with LED light. We performed an in-silico analysis with the genome of strain *B. cereus* ATCC14579 and the primers described Table 1, observing the amplification of both genes of interest of the desired size, and we used strain *B. cereus* ATCC14579 as a positive control.

### Statistical analysis

Results per strain represent the average of at least three independent experiments. The effects of the material, source of isolation, and sugar supplementation on the formation of biofilms by strains of *B. cereus* group were compared using Mann-Whitney *U* for two groups or Kruskal-Wallis for more than two groups with a Bonferroni post hoc test and Tukey. *p* values less than 0.05 were considered statistically significant.



**Figure 1** Biofilm production in different materials and by source isolation at 37 °C with O<sub>2</sub>. (a) Biofilm production of *B. cereus* group strains in different materials and (b) from source isolation: light blue circles, powered infant formula; gray squares, surfaces; orange triangles, infant food; purple triangles, eggshell. \**p* ≤ 0.05, \*\*\*\**p* ≤ 0.0001. In the X axis are the materials and, in the Y, the specific biofilm formation (SBF). Top Kruskal-Wallis post hoc Dunn's. Lower ANOVA.



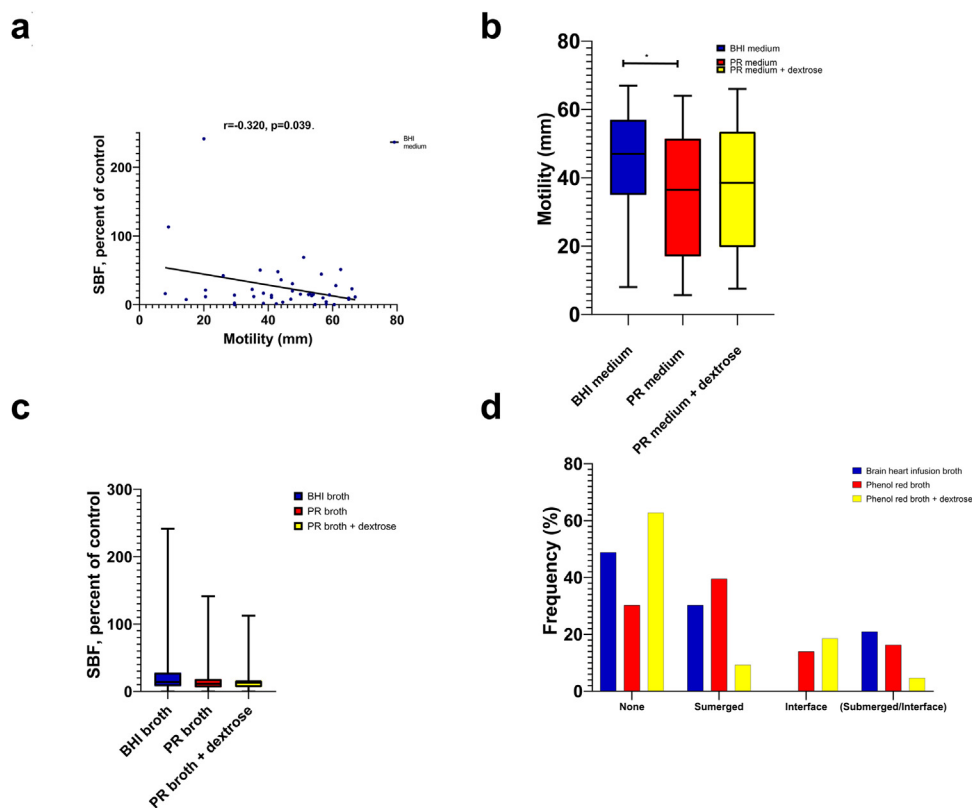
**Figure 2** Sugar influence in biofilm production. (a) Biofilms production in the different materials with and without sugar supplementation. \**p* ≤ 0.05, \*\*\**p* ≤ 0.001, \*\*\*\**p* ≤ 0.0001. Red boxes are phenol red broth. Yellow boxes are phenol red broth plus dextrose. (a) ANOVA post hoc Bonferroni.

## Results

### Biofilm production in different materials, sugar influence in biofilm production

This study found differential biofilm production in BHI broth regarding the materials used. We observe a higher production of biofilms by strains (specific biofilm formation, SBF) in PVC (*p* < 0.0001) and PVC glass (*p* < 0.0001) compared to glass. Regarding the origin of isolation of the strains, we did not find statistically significant differences with the materials used (Fig. 1).

We compare biofilm production on different materials. When phenol red broth was supplemented or not with dextrose, we observed a higher production of biofilms in the absence of dextrose in the materials polystyrene (*p* = 0.0002), polyethylene (*p* = 0.02), and PVC glass (*p* < 0.0001) (Fig. 2).



**Figure 3** Relationship between biofilm production and motility on different media. (a) Relationship between biofilm production and motility on BHI medium, (b) motility on different media, (c) biofilms production of 43 strains on glass on different media, and (d) biofilm type frequency on different media. The color blue is brain heart infusion broth/medium, the color red is phenol red broth/medium and the color yellow is phenol red broth/medium plus dextrose. (a) Spearman correlation, (b) Kruskal–Wallis post hoc Dunn’s, and (c) Kruskal–Wallis.

### Relationship between biofilm production and motility on different media

The relationship between biofilm production and motility was sought, finding a negative correlation during the production of biofilms in the glass with BHI broth ( $R = -0.320$ ,  $p = 0.039$ ) (Fig. 3a). Furthermore, we compared the motility of the strains in semi-solid culture media BHI, phenol red, and phenol red with dextrose. We found that strains have higher motility in BHI than to phenol red ( $p = 0.04$ ) (Fig. 3b). When finding differences between motility in BHI and phenol red, it was expected to find differences in biofilm production. However, no statistically significant differences were found (Fig. 3c). However, when classified by type of biofilm, in the BHI broth (medium in which greater motility was observed), no submerged biofilms were found compared to phenol red broth and phenol red broth supplemented with dextrose (Fig. 3d).

### Molecular identification, toxin gene and genes related to biofilm production profiling of *B. cereus* group isolates

Regarding the enterotoxigenic profile, we did not find strains with the *ces* gene; but we identified eight different enterotoxigenic profiles, the most common being the profile that

includes genes for the three enterotoxins (NHE, HBL, and CYTK) (12/43, 27.9%); When comparing them by origin, the profile mentioned above was the most common in isolated strains of the infant food; in the case of eggshell, the most common profile included the genes for the enterotoxins NHE and HBL; for strains isolated from surfaces and powdered infant formula, the profile that only had the cytotoxin K gene (*cytK*) was the most frequent; It is important to mention that most of the strains had at least one gene for one of the three most important enterotoxins of *B. cereus* (36/43, 83.72%) (Table 2 and Fig. S2).

This study includes two genes previously described as important for producing biofilms. We observed the *sipW* and *tasA* genes more frequently in the strains isolated from eggshells (Table 3 and Fig. S3). We compared biofilm production with the presence of these two genes; however, no significant differences were found (Fig. S4).

### Discussion

In this study, we worked with strains of the *Bacillus cereus* group isolated from different foods, which have previously been reported contaminated by this microorganism<sup>3,6,27,30,32,42,44,52</sup>, considering that biofilm production could be a strategy for contamination. We decided to include strains isolated from stainless steel metal surfaces

**Table 2** Toxin gene profiles of *Bacillus cereus* group isolates by source.

Toxin profile	<i>Nhe</i>	<i>hbl</i>	<i>ces</i>	<i>cytK</i>	Source			
					PIF	Surfaces	Infant food	Eggshell
1	+	+	–	+	3	2	6	1
2	–	–	–	+	4	5	1	–
3	+	–	–	–	–	–	1	–
4	+	–	–	+	3	–	–	–
5	–	+	–	+	–	1	3	–
6	+	+	–	–	–	1	–	3
7	–	+	–	–	–	1	–	–
8	–	–	–	–	1	3	2	1

PIF: powered infant formula.

**Table 3** Frequency of biofilm-related genes by isolation source of strain of *B. cereus* group.

Gene	Source			
	PIF N = 11, n (%)	Surfaces N = 13, n (%)	Infant food N = 13, n (%)	Eggshell N = 5, n (%)
<i>sipW</i>	2 (18.18)	0	0	2 (40)
<i>tasA</i>	2 (18.18)	1 (7.69)	8 (61.53)	4 (80)

PIF: powered infant formula.

because a greater production of biofilms on stainless steel plates has been described in other materials (polystyrene), in addition to the fact that biofilms or spores have been described on surfaces of this material<sup>17</sup>.

We decided to carry out the molecular identification of the *B. cereus* group by amplifying the *gyrB* gene (Fig. S1) because it is a technique that does not require gene sequencing, allowing a significant number of samples to be processed. Furthermore, Wei et al.<sup>49</sup> describe that using this primer among 111 *B. cereus* strains, 106 strains were positive (95%). Non-members of the *B. cereus* group (*B. amyloliquefaciens*, *B. subtilis*, *Enterococcus faecalis*, *Escherichia coli*, *Listeria monocytogenes*, *Micrococcus luteus*, *Salmonella enterica*, *Staphylococcus aureus*, *Streptococcus pyogenes*) were also subjected to the PCR assay to test the specificity of the primers. These strains showed no amplification (0/9).

The strains were able to produce biofilms in different materials, which are commonly used in the industry, such as PVC in product conveyor belts and glass, polystyrene, and polyethylene in the production of food containers and plastic containers<sup>20</sup>. In this study, we used the BHI culture medium to determine biofilms on these materials because, in this culture medium, greater production of biofilms by strains of the *B. cereus* group has been reported compared to the soybean trypticase medium or the phenol red<sup>1,25</sup>. The BHI medium contains nutrients from the brain heart infusion, peptone, and glucose components. The peptones and infusion are organic nitrogen, carbon, sulfur, vitamins, and trace substances. Glucose is the carbohydrate source that microorganisms utilize by fermentative action. The medium is buffered with disodium phosphate.

When determining the biofilms, we found statistically significant differences in PVC and glass/PVC compared to glass; these data have already been previously reported by

Adame et al.<sup>1</sup>. In addition, various authors report the production of biofilms is different according to the material used. Hayrapetyan et al.<sup>25</sup>, report a higher production in stainless steel to polystyrene as well Wijman et al.<sup>50</sup>. These production differences may be related to these materials' physicochemical characteristics, such as hydrophobicity<sup>13</sup>. Also, it is interesting that strains did not show differences in PVC or glass but showed a significant difference in PVC/glass. This phenomenon may be related to biofilms, once mature at 24 h, could release spores or vegetative cells into the medium tube<sup>50</sup>, which could spread, and in this case, adhere to the glass.

We consider that the differences in biofilm production between materials could be related to the characteristics of the strain. Hayrapetyan et al.<sup>24</sup>, describe the genetic variability of *B. cereus*, which could be related to the different iron uptake systems inherent in the strains and could be related to the source of obtaining iron and, therefore, its ability to grow and form biofilms. It could also explain the effect of the origin of isolation of the strain. Hayrapetyan et al.<sup>25</sup>, compared biofilm production according to isolation without finding statistically significant differences. Various studies have found differences regarding the origin of isolation, Kamar et al.<sup>31</sup>, describe a greater production of biofilms in isolated strains of food poisoning to non-pathogenic strains. Auger et al.<sup>5</sup>, describe a higher production of biofilms in strains isolated from soil and gastrointestinal diseases than isolated ones from different non-gastrointestinal diseases. One possible explanation is the type of comparison; the authors described above consider different isolation sources (soil, gastrointestinal diseases, food). Our study is the same source of isolation from food, while the comparison is between different types of foods.

Previously, we reported the formation of biofilms using red phenol broth<sup>1</sup>. For this reason, we decided to continue working with this culture broth because it is an advantage the opportunity to supplement with carbohydrates and observe the effect on the production of biofilms. After all, an increase in the expression of genes related to fermentative pathways has been previously reported during biofilm production in *B. cereus* and products of these pathways strongly promote the production of biofilms such as ethanol and acetoin<sup>51</sup>. The red phenol broth is a complete medium without added carbohydrates. The pancreatic digest of casein provides nutrients and, is low in fermentable carbohydrates. The pH indicator, phenol red, is used to detect acid production. We use dextrose as a fermentable carbohydrate because all the strains utilize this carbohydrate. We found a decrease in biofilm production in some materials in the presence of dextrose, but it was not a consistent result in all. The above could be explained because the production of biofilms is not only affected by the presence of carbohydrates in the medium; Okshevsky et al.<sup>39</sup>, identify 91 genes involved in the production of biofilms, and these genes encode functions such as chemotaxis, amino acid metabolism, and cell repair mechanisms. Also, it is mentioned that most of its mutants are not motile, which confirms the theory that motility is involved in the production of biofilms. In addition to carbohydrates and amino acids, it has been described that other trace elements could be important during the production of biofilms, such as iron or manganese<sup>25,29,51</sup>.

As described above, there is a decrease in the expression of genes related to motility during biofilm production. For this reason, we find a negative correlation between the motility of the strains on BHI agar and the production of biofilms in the glass. When strains with large motility halos were found, lower biofilms with this medium could be suspected. However, compared with phenol red broth and phenol red broth supplemented with dextrose, media in which lower motility halos were observed, no significant differences were determined. In the safranin method, at the time of incubation with 70% methanol, all the safranin adhered to the biofilm is released, regardless of the biofilm is an interface or submerged. We, therefore, consider performing an analysis according to the type of biofilm and culture media. We found that in the BHI broth (strains with higher motility halo), no strains with submerged biofilm production were found compared to the other media.

Regarding the production of submerged and interface biofilms with motility. Hayrapetyan et al.<sup>26</sup>, described that the mutant strains for *rpoN* did not present swarming-type halos (related to flagellum synthesis) and the biofilms produced were submerged. However, in the WT strain (*B. cereus* ATCC 1579) and in the strain in which *rpoN* was restored, the swarming halo and the formation of surface biofilms were observed. The above could explain the results obtained in BHI, where the strains with greater motility would form a greater quantity of surface biofilms. Houry et al.<sup>28</sup>, described that the flagellum is necessary for forming biofilms in the air-liquid. Hayrapetyan et al.<sup>25</sup>, described that most of the isolates from the food he used produce BHI air-liquid biofilms. They also explain that the production of submerged biofilms by strains in *B. cereus* in BHI medium is rare. In this sense, our results show that it is

rare because the medium does not favor the production of this type of biofilm. Gao et al.<sup>21</sup>, report that *B. cereus* surface-associated biofilms takes place under conditions of glucose fermentation and depends on a drop in the pH of the medium.

In this study, to determine the toxigenic profile of the strains, we used the PCR technique implemented by Ehling-Schulz et al.<sup>15</sup>. These PCR allows a pair of primers for each enterotoxin to identify at least the joint presence of two subunits of the *nheABC* or *hblABD* operon. The above simplifies the search for enterotoxigenic strains of *B. cereus*. Also, Ehling-Schulz et al.<sup>15</sup>, describe those primers that allowed the detection of enterotoxin genes previously missed by PCR. According to enterotoxigenic profiles, it is important to mention the high frequency of strains with enterotoxigenic profile 1, which includes strains with genes for all three enterotoxins, which have been previously described<sup>2,12,15,30,41</sup>. In addition, the most common profiles included the *nheABC* operon and the *cytK* gene, which has been reported to be more frequent in strains isolated from food<sup>15</sup>. In this study, no strains with the *ces* gene were found; in this sense, various studies report negative or low results for this gene of interest<sup>4,47</sup>. The search for emetic strains is relevant because emetic strains represent a particular risk in heat-processed foods or preheated foods that are kept warm<sup>8</sup>. It is important to mention that most strains have at least one enterotoxin gene; it highlights their toxigenic potential. When strains are combined with biofilms, it could increase their importance in the food industry. However, a decrease in the expression of the *nheABC* and *hblABD* operons has been reported in strains during biofilm formation and has a lesser effect in HeLa cells. Also, it has been described that these cells, when shedding, can contaminate different products, change gene expression, and favor the production of toxins<sup>10</sup>.

The *sipW* and *tasA* genes have recently been described as orthologous genes of *sipW* and *tasA* of *B. subtilis*. They could fulfill the same function in biofilm formation, *tasA* codes for an amyloid protein, a structural component of *B. cereus* biofilms. *SipW* is a protein-related to the modification of *tasA*<sup>11</sup>. Previously, we showed the presence of these genes in strains of the *B. cereus* group; however, a few strains were used<sup>1</sup>. In this study, 43 strains were included where *tasA* was more prevalent to *sipW*, mentioning that all *sipW*-positive strains also had *tasA*, which their genetic arrangement could explain in the bacterial chromosome and their function<sup>11</sup>. This study found no statistically significant differences between *tasA* positive and negative strains.

On the one hand, we consider that the sequences where the primers have been designed are not conserved. Therefore, we consider that the primer design can be carried out in future studies, taking up this point. On the other hand, this could be related to the possible regulation of *tasA* either by the null or low expression of this protein during the production of biofilms under the experimental conditions tested. For example, Caro-Astorga et al.<sup>11</sup>, used TY broth and MSgg broth; unlike in this study, we used BHI broth and phenol red broth. Therefore, the analysis of the expression of this protein should be considered in the future. In addition, considering the contribution of other proteins to the exopolysaccharide matrix, such as capsular polysaccharide (*eps2*)<sup>9</sup>. Caro-Astorga et al.<sup>11</sup>, describe that wild-type

cells formed visible rings after 24 h of growth, which grew in thickness up to 72 h; while  $\Delta$ tasA strain, a thicker biomass ring, was observed at 24 h, which disappeared at 72 h. These observations revealed that this gene is important for biofilm formation in *B. cereus*. Considering the origin of isolation of the strain, a different distribution of these genes was observed in the strains used, being more common in strains isolated from infant food and egg. Even when no literature elucidates this behavior, it could be related to the genetic diversity of microorganisms and particular characteristics that allow them to contaminate certain food products.

The study highlights its importance due to an increase in the publication about *B. cereus* and the production of biofilms<sup>36</sup>, a mechanism that favors its environmental resistance, which was already facilitated by the production of endospores<sup>45</sup> and that does not favor its eradication from food production environments<sup>43</sup>.

## Funding

This research was funded by the Secretaría de Educación Pública. Itzel Maralhi Cruz Facundo had a student scholarship [966901] granted by Consejo Nacional de Ciencia y Tecnología.

## Conflict of interest

The authors declare that they have no conflicts of interest.

## Acknowledgments

We appreciate the support in the preparation of the media and the different materials to Laura Isabel Reyna Terán and José Ángel Flores Ávila.

## Appendix A. Supplementary data

Supplementary data associated with this article can be found, in the online version, at [doi:10.1016/j.ram.2023.01.007](https://doi.org/10.1016/j.ram.2023.01.007).

## References

1. Adame-Gómez R, Cruz-Facundo IM, García-Díaz LL, Ramírez-Sandoval Y, Pérez-Valdespino A, Ortuño-Pineda C, Santiago-Dionisio MC, Ramírez-Peralta A. Biofilm production by enterotoxigenic strains of *Bacillus cereus* in different materials and under different environmental conditions. *Microorganisms*. 2020;8:1071, [http://dx.doi.org/10.3390/microorganisms8071071](https://doi.org/10.3390/microorganisms8071071).
2. Adame-Gómez R, Muñoz-Barrios S, Castro-Alarcón N, Leyva-Vázquez MA, Toribio-Jiménez J, Ramírez-Peralta A. Prevalence of the strains of *Bacillus cereus* group in artisanal Mexican cheese. *Foodborne Pathog Dis*. 2020;17:8–14, [http://dx.doi.org/10.1089/fpd.2019.2673](https://doi.org/10.1089/fpd.2019.2673).
3. Adame-Gómez R, Guzman-Guzman KA, Vences-Velazquez A, Leyva-Vazquez MA, Muñoz-Barrios S, Ramírez-Peralta A. Prevalence and genetic diversity of the strains of *Bacillus cereus* groups in food for infants and young children in Mexico. *Afr J Microbiol Res*. 2018;12:730–5, [http://dx.doi.org/10.5897/AJMR2018.8921](https://doi.org/10.5897/AJMR2018.8921).

4. Altayar M, Sutherland AD. *Bacillus cereus* is common in the environment but emetic toxin producing isolates are rare. *J Appl Microbiol*. 2006;100:7–14, [http://dx.doi.org/10.1111/j.1365-2672.2005.02764.x](https://doi.org/10.1111/j.1365-2672.2005.02764.x).
5. Auger S, Ramarao N, Faille C, Fouet A, Aymerich S, Gohar M. Biofilm formation and cell surface properties among pathogenic and nonpathogenic strains of the *Bacillus cereus* group. *Appl Environ Microbiol*. 2009;75:6616–8, [http://dx.doi.org/10.1128/AEM.00155-09](https://doi.org/10.1128/AEM.00155-09).
6. Becker H, Schaller G, von Wiese W, Terplan G. *Bacillus cereus* in infant foods and dried milk products. *Int J Food Microbiol*. 1994;23:1–15.
7. Beecher DJ, Macmillan JD. Characterization of the components of hemolysin BL from *Bacillus cereus*. *Infect Immun*. 1991;59:1778–84, [http://dx.doi.org/10.1128/IAI.59.5.1778-1784.1991](https://doi.org/10.1128/IAI.59.5.1778-1784.1991).
8. Carlin F, Fricker M, Pielaat A, Heisterkamp S, Shaheen R, Salonen MS, Svensson B, Nguyen-the C, Ehling-Schulz M. Emetic toxin-producing strains of *Bacillus cereus* show distinct characteristics within the *Bacillus cereus* group. *Int J Food Microbiol*. 2006;109:132–8, [http://dx.doi.org/10.1016/j.ijfoodmicro.2006.01.022](https://doi.org/10.1016/j.ijfoodmicro.2006.01.022).
9. Caro-Astorga J, Álvarez-Mena A, Hierrezuelo J, Guadix JA, Heredia-Ponce Z, Arboleda-Estudillo Y, González-Munoz E, de Vicente A, Romero D. Two genomic regions encoding exopolysaccharide production systems have complementary functions in *B. cereus* multicellularity and host interaction. *Sci Rep*. 2020;10:1–15, [http://dx.doi.org/10.1038/s41598-020-57970-3](https://doi.org/10.1038/s41598-020-57970-3).
10. Caro-Astorga J, Frenzel E, Perkins JR, Álvarez-Mena A, de Vicente A, Ranea JAG, Kuipers OP, Romero D. Biofilm formation displays intrinsic offensive and defensive features of *Bacillus cereus*. *NPJ Biofilms Microbiomes*. 2020;6:1–15, [http://dx.doi.org/10.1038/s41522-019-0112-7](https://doi.org/10.1038/s41522-019-0112-7).
11. Caro-Astorga J, Pérez-García A, de Vicente A, Romero DA. Genomic region involved in the formation of adhesin fibers in *Bacillus cereus* biofilms. *Front Microbiol*. 2015;5:1–11, [http://dx.doi.org/10.3389/fmicb.2014.00745](https://doi.org/10.3389/fmicb.2014.00745).
12. Chon JW, Kim JH, Lee SJ, Hyeon JY, Seo KH. Toxin profile, antibiotic resistance, and phenotypic and molecular characterization of *Bacillus cereus* in Sunsik. *Food Microbiol*. 2012;32:217–22, [http://dx.doi.org/10.1016/j.fm.2012.06.003](https://doi.org/10.1016/j.fm.2012.06.003).
13. De-la-Pinta I, Cobos M, Ibarretxe J, Montoya E, Eraso E, Guraya T, Quindós G. Effect of biomaterials hydrophobicity and roughness on biofilm development. *J Mater Sci Mater Med*. 2019;30:77, [http://dx.doi.org/10.1007/s10856-019-6281-3](https://doi.org/10.1007/s10856-019-6281-3).
14. Dupont C, Jobin M, Schmitt P. Adaptation in *Bacillus cereus*: from stress to disease. *Front Microbiol*. 2016;7:1550, [http://dx.doi.org/10.3389/fmicb.2016.01550](https://doi.org/10.3389/fmicb.2016.01550).
15. Ehling-Schulz M, Guinebretiere MH, Monthan A, Berge O, Fricker M, Svensson B. Toxin gene profiling of enterotoxigenic and emetic *Bacillus cereus*. *FEMS Microbiol Lett*. 2006;260:232–40, [http://dx.doi.org/10.1111/j.1574-6968.2006.00320.x](https://doi.org/10.1111/j.1574-6968.2006.00320.x).
16. Ehling-Schulz M, Fricker M, Scherer S. *Bacillus cereus*, the causative agent of an emetic type of food-borne illness. *Mol Nutr Food Res*. 2004;48:479–87, [http://dx.doi.org/10.1002/mnfr.200400055](https://doi.org/10.1002/mnfr.200400055).
17. Faille C, Bénézec T, Midelet-Bourdin G, Lequette Y, Clarisse M, Ronse G, Ronse A, Slomianny C. Sporulation of *Bacillus* spp. within biofilms: a potential source of contamination in food processing environments. *Food Microbiol*. 2014;40:64–74, [http://dx.doi.org/10.1016/j.fm.2013.12.004](https://doi.org/10.1016/j.fm.2013.12.004).
18. Faille C, Tauveron G, Le Gentil-Lelièvre C, Slomianny C. Occurrence of *Bacillus cereus* spores with a damaged exosporium: consequences on the spore adhesion on surfaces of food processing lines. *J Food Prot*. 2007;70:2346–53, [http://dx.doi.org/10.4315/0362-028x-70.10.2346](https://doi.org/10.4315/0362-028x-70.10.2346).



19. Faille C, Jullien C, Fontaine F, Bellon-Fontaine MN, Slo-mianny C, Benezech T. Adhesion of *Bacillus* spores and *Escherichia coli* cells to inert surfaces: role of surface hydrophobicity. *Can J Microbiol.* 2002;48:728–38, <http://dx.doi.org/10.1139/w02-063>.
20. FDA. CFR Title 21 – Food and drugs, vol. 21; 2020.
21. Gao T, Foulston L, Chai Y, Wang Q, Losick R. Alternative modes of biofilm formation by plant-associated *Bacillus cereus*. *MicrobiologyOpen.* 2015;4:452–64, <http://dx.doi.org/10.1002/mbo3.251>.
22. Granum PE. *Bacillus cereus* and its toxins. *Soc Appl Bacteriol Symp Ser.* 1994;23:61S–65S.
23. Gunduz GT, Tuncel G. Biofilm formation in an ice cream plant. *Antonie Van Leeuwenhoek.* 2006;89:329–36, <http://dx.doi.org/10.1007/s10482-005-9035-9>.
24. Hayrapetyan H, Siezen R, Abee T, Nierop Groot M. Comparative genomics of iron-transporting systems in *Bacillus cereus* strains and impact of iron sources on growth and biofilm formation. *Front Microbiol.* 2016;7:842, <http://dx.doi.org/10.3389/fmicb.2016.00842>.
25. Hayrapetyan H, Muller L, Tempelaars M, Abee T, Nierop Groot M. Comparative analysis of biofilm formation by *Bacillus cereus* reference strains and undomesticated food isolates and the effect of free iron. *Int J Food Microbiol.* 2015;200:72–9, <http://dx.doi.org/10.1016/j.ijfoodmicro.2015.02.005>.
26. Hayrapetyan H, Tempelaars M, Nierop Groot M, Abee T. *Bacillus cereus* ATCC 14579 RpoN (Sigma 54) is a pleiotropic regulator of growth, carbohydrate metabolism, motility, biofilm formation and toxin production. *PLoS One.* 2015;10:1–19, <http://dx.doi.org/10.1371/journal.pone.0134872>.
27. Heini N, Stephan R, Ehling-Schulz M, Johler S. Characterization of *Bacillus cereus* group isolates from powdered food products. *Int J Food Microbiol.* 2018;283:59–64, <http://dx.doi.org/10.1016/j.ijfoodmicro.2018.06.019>.
28. Houry A, Briandet R, Aymerich S, Gohar M. Involvement of motility and flagella in *Bacillus cereus* biofilm formation. *Microbiology.* 2010;156:1009–18, <http://dx.doi.org/10.1099/mic.0.034827-0>.
29. Hussain MS, Kwon M, Oh DH. Impact of manganese and heme on biofilm formation of *Bacillus cereus* food isolates. *PLoS One.* 2018;2018:e0200958, <http://dx.doi.org/10.1371/journal.pone.0200958>.
30. Hwang JY, Park JH. Characteristics of enterotoxin distribution, hemolysis, lecithinase, and starch hydrolysis of *Bacillus cereus* isolated from infant formulas and ready-to-eat foods. *J Dairy Sci.* 2015;98:1652–60, <http://dx.doi.org/10.3168/jds.2014-9042>.
31. Kamar R, Gohar M, Jéhanno I, Réjasse A, Kallassy M, Lereclus D, Sanchis V, Ramarao N. Pathogenic potential of *Bacillus cereus* strains as revealed by phenotypic analysis. *J Clin Microbiol.* 2013;51:320–3, <http://dx.doi.org/10.1128/JCM.02848-12>.
32. Kone AZ, Jan S, Le Marechal C, Grosset N, Gautier M, Puterflam J, Baron F. Identifying risk factors for eggshell contamination by *Bacillus cereus* group bacteria in French laying farms. *Br Poult Sci.* 2013;54:298–305, <http://dx.doi.org/10.1080/00071668.2013.783900>.
33. Kwon M, Hussain MS, Oh DH. Biofilm formation of *Bacillus cereus* under food-processing-related conditions. *Food Sci Biotechnol.* 2017;26:1103–11, <http://dx.doi.org/10.1007/s10068-017-0129-8>.
34. Lund T, De Buyser ML, Granum PE. A new cytotoxin from *Bacillus cereus* that may cause necrotic enteritis. *Mol Microbiol.* 2000;38:254–61.
35. Lund T, Granum PE. Characterization of a non-haemolytic enterotoxin complex from *Bacillus cereus* isolated after a foodborne outbreak. *FEMS Microbiol Lett.* 1996;141:151–6, <http://dx.doi.org/10.1111/j.1574-6968.1996.tb08377.x>.
36. Majed R, Faille C, Kallassy M, Gohar M. *Bacillus cereus* biofilms – same, only different. *Front Microbiol.* 2016;7:1–16, <http://dx.doi.org/10.3389/fmicb.2016.01054>.
37. Marchand S, Block JD, Jonghe VD, Coorevits A, Heyndrickx M, Herman L. Biofilm formation in milk production and processing environments: influence on milk quality and safety. *Compr Rev Food Sci Food Saf.* 2012;11:133–47, <http://dx.doi.org/10.1111/j.1541-4337.2011.00183.x>.
38. Niu C, Gilbert S. Colorimetric method for identifying plant essential oil components that affect biofilm formation and structure. *Appl Environ Microbiol.* 2004;70:6951–6, <http://dx.doi.org/10.1128/AEM.70.12.6951-6956.2004>.
39. Okshevsy M, Louw MG, Lamela EO, Nilsson M, Tolker-Nielsen T, Meyer RLA. Transposon mutant library of *Bacillus cereus* ATCC 10987 reveals novel genes required for biofilm formation and implicates motility as an important factor for pellicle-biofilm formation. *MicrobiologyOpen.* 2018;7:1–17, <http://dx.doi.org/10.1002/mbo3.552>.
40. Oltuszak-Walczak E, Walczak P. PCR detection of cytK gene in *Bacillus cereus* group strains isolated from food samples. *J Microbiol Methods.* 2013;95:295–301, <http://dx.doi.org/10.1016/j.mimet.2013.09.012>.
41. Park YB, Kim JB, Shin SW, Kim JC, Cho SH, Lee BK, Ahn J, Kim JM, Oh DH. Prevalence, genetic diversity, and antibiotic susceptibility of *Bacillus cereus* strains isolated from rice and cereals collected in Korea. *J Food Prot.* 2009;72:612–7.
42. Rahimi E, Abdos F, Momtaz H, Baghbadorani ZT, Jalali M. *Bacillus cereus* in infant foods: prevalence study and distribution of enterotoxigenic virulence factors in Isfahan Province, Iran. *Sci World J.* 2013;2013:1–5, <http://dx.doi.org/10.1155/2013/292571>.
43. Ryu JH, Beuchat LR. Biofilm formation and sporulation by *Bacillus cereus* on a stainless-steel surface and subsequent resistance of vegetative cells and spores to chlorine, chlorine dioxide, and a peroxyacetic acid-based sanitizer. *J Food Prot.* 2005;68:2614–22, <http://dx.doi.org/10.4315/0362-028x-68.12.2614>.
44. Sadek ZI, Abdel-Rahman MA, Azab MS, Darwesh OM, Hassan MS. Microbiological evaluation of infant foods quality and molecular detection of *Bacillus cereus* toxins relating genes. *Toxicol Rep.* 2018;5:871–7, <http://dx.doi.org/10.1016/j.toxrep.2018.08.013>.
45. Shaheen R, Svensson B, Andersson MA, Christiansson A, Salkinoja-Salonen M. Persistence strategies of *Bacillus cereus* spores isolated from dairy silo tanks. *Food Microbiol.* 2010;27:347–55, <http://dx.doi.org/10.1016/j.fm.2009.11.004>.
46. Storgårds E, Tapani K, Hartwall P, Saleva R, Suihko ML. Microbial attachment and biofilm formation in brewery bottling plants. *J Am Soc Brew Chem.* 2006;64:8–15, <http://dx.doi.org/10.1094/ASBCJ-64-0008>.
47. Svensson B, Monthán A, Shaheen R, Andersson MA, Salkinoja-Salonen M, Christiansson A. Occurrence of emetic toxin producing *Bacillus cereus* in the dairy production chain. *Int Dairy J.* 2006;16:740–9, <http://dx.doi.org/10.1016/j.idairyj.2005.07.002>.
48. Tauveron G, Slomianny C, Henry C, Faille C. Variability among *Bacillus cereus* strains in spore surface properties and influence on their ability to contaminate food surface equipment. *Int J Food Microbiol.* 2006;110:254–62, <http://dx.doi.org/10.1016/j.ijfoodmicro.2006.04.027>.
49. Wei S, Chelliah R, Park BJ, Park JH, Forghani F, Park YS, Cho MS, Park DS, Oh DH. Molecular discrimination of *Bacillus cereus* group species in foods (Lettuce, Spinach, and Kimbap) using quantitative real-time PCR targeting GroEL and GyrB. *Microb Pathog.* 2018;115:312–20, <http://dx.doi.org/10.1016/j.micpath.2017.12.079>.

50. Wijman JGE, de Leeuw PPLA, Moezelaar R, Zwietering MH, Abee T. Air-liquid interface biofilms of *Bacillus cereus*: formation, sporulation, and dispersion. *Appl Environ Microbiol.* 2017;73:1481–8, <http://dx.doi.org/10.1128/AEM.01781-06>.
51. Yan F, Yu Y, Gozzi K, Chen Y, Guo JH, Chai Y. Genome-wide investigation of biofilm formation in *Bacillus cereus*. *Appl Environ Microbiol.* 2017;83:1–18, <http://dx.doi.org/10.1128/AEM.00561-17>.
52. Zhang Y, Chen J, Feng C, Zhan L, Zhang J, Li Y, Yang Y, Chen H, Zhang Z, Zhang Y, Mei L, Li H. Quantitative prevalence, phenotypic and genotypic characteristics of *Bacillus cereus* isolated from retail infant foods in China. *Foodborne Pathog Dis.* 2017;14:564–72, <http://dx.doi.org/10.1089/fpd.2017.2287>.